

R. 9 E.

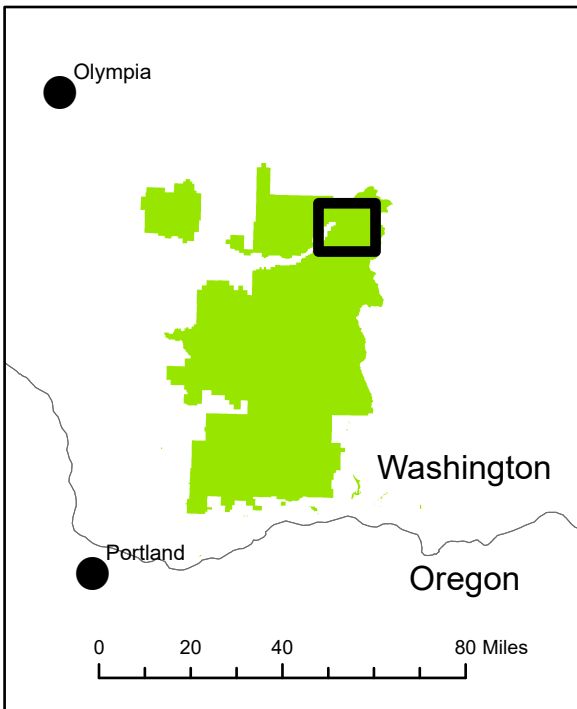
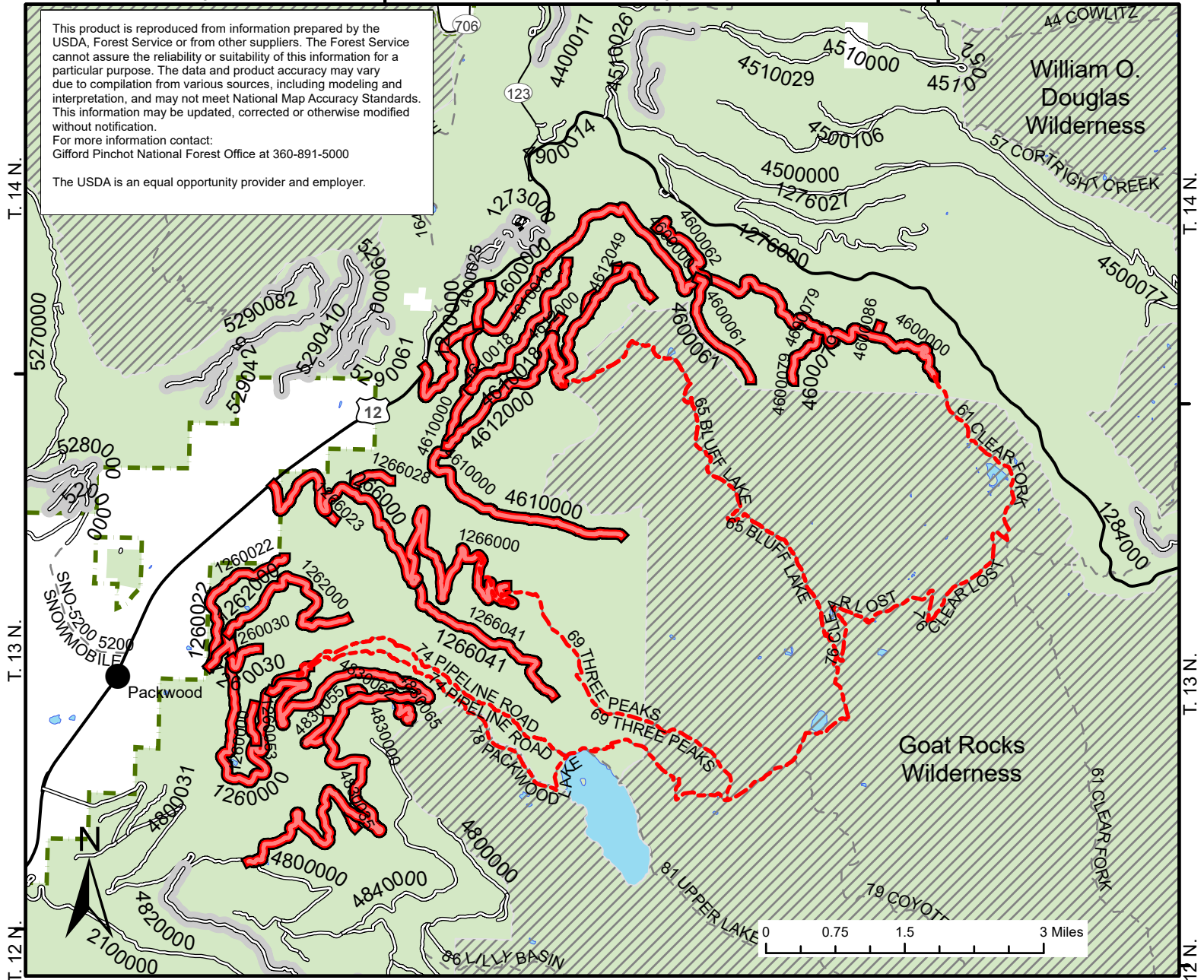
R. 10 E.

R. 11 E.

This product is reproduced from information prepared by the USDA, Forest Service or from other suppliers. The Forest Service cannot assure the reliability or suitability of this information for a particular purpose. The data and product accuracy may vary due to compilation from various sources, including modeling and interpretation, and may not meet National Map Accuracy Standards. This information may be updated, corrected or otherwise modified without notification.

For more information contact:
Gifford Pinchot National Forest Office at 360-891-5000

The USDA is an equal opportunity provider and employer.



**Gifford Pinchot National Forest
USDA Forest Service
Goat Rocks Area Closure
Forest Order No. 06-03-05-22-02
EXHIBIT A**



- Closed Road
- Closed Trail
- Roads Open to All Vehicles, Yearlong
- Roads Open to All Vehicles, Seasonal
- Roads Open to Highway Legal Vehicles Only, Yearlong
- Roads Open to Highway Legal Vehicles Only, Seasonal
- Special Designation, Yearlong
- Special Designation, Seasonal
- State or US Highway
- Other Public Roads
- GPNF Boundary
- National Forest System Land
- Wilderness
- Roads Open to Highway Legal Vehicles Only, Seasonal
- Special Designation, Yearlong
- Special Designation, Seasonal
- State or US Highway
- Other Public Roads